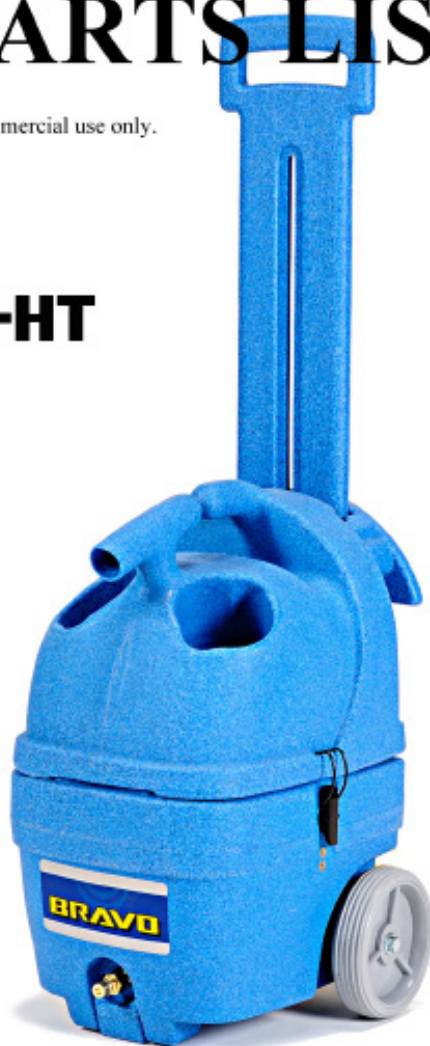


BRAVO WITH HEAT

OWNER'S MANUAL & PARTS LIST

This equipment is intended for commercial use only.

300MH-HT



EDIC

1753 BLAKE AVENUE □ LOS ANGELES, CA 90031 □ (800)338-EDIC OR (323) 660-1635 □ FAX (323) 667-0144

BEFORE OPERATING THE MACHINE

Read the manual carefully and completely before attempting to operate the unit. This manual has important information for the use and safe operation of the machine. Keep this manual handy at all times. This machine will assure years of satisfactory service if operated and maintained according to recommendations in this manual. If additional information is needed, please contact your local distributor or write to:

EDIC
1753 Blake Ave.
Los Angeles, CA 90031



WARNING

- This machine was designed for use on carpet and upholstery extraction applications as per instructions and recommendations written in this manual. Any deviation from its proper use or purpose and the consequential damage that may occur is the sole responsibility of the end user.
- Disconnect the power cord from the outlet before servicing. Do not leave machine connected to an electrical outlet when unattended.
- Do not immerse or use this machine in standing water. Such use may cause electric shock.
- This equipment is not designed to handle or use combustible/volatile substances such as gasoline or kerosene, in, on, or near the machine. The use of such materials will cause an extreme hazardous condition.
- When using an extension cord, use only a 3 conductor grounding cord – 14 gauge wire or heavier.
- To avoid electric shock, do not expose the unit to rain – store it indoors only.
- Use defoamer at ALL times to prevent damage to the vacuum motor(s).
- Do not use water in excess of 170°F (76°C).
- To prevent seal damage and chemical build-up to the pump system, run clean water through the solution lines after each day's use.
- Use only commercially available carpet cleaning solutions and defoamer intended for use with machines of this type. Do not use dyes, bleaches, ammonia, or other additives. The use of powdered cleaning solution, if not diluted properly, may result in damage to the pump. If powdered chemicals are used, premix in a separate container before placing in the solution tank.
- Do not expose machine to freezing temperatures. (Keep in mind that the freezing temperature of water inside metal is between 32 and 40 degrees F)
- All repairs must be done by an authorized EDIC repair station.
- Do not use replacement parts other than those specified on the parts list.
- DO NOT REMOVE SOLUTION TANK SCREEN FOR ANY REASON WHILE MACHINE IS PLUGGED IN AND/OR RUNNING. DO NOT PUT ANY BODY PART IN SOLUTION TANK TO CHECK WATER TEMPERATURE.
- DO NOT STORE UNIT IN ANY LOCATION THAT GETS BELOW 40 DEGREES F.
- DO NOT RUN HEATER DRY OR UNATTENDED.

FAILURE TO COMPLY WITH THE ABOVE WARNING INSTRUCTIONS WILL VOID THE WARRANTY

GROUNDING INSTRUCTIONS

The 120 V. A/C and the 220 V. A/C models have been outfitted with the appropriate grounded connectors. Make sure the machine is connected to a grounded outlet having the same configuration as the grounded plug. No adapter should be used with this machine. Any modification to the connectors will void the warranty.



PREPARING THE MACHINE

1. Unfasten the two latches which hold the recovery tank to the solution tank. Lift recovery tank off solution tank.
2. Pour clean solution into the solution tank. (**NOTE:** The heater will not turn on unless the tank is filled to the required level)
3. Replace the recovery tank onto the solution tank and fasten the two latches.
4. Plug power cord into a grounded power outlet.
5. Connect vacuum and solution hoses to the Bravo.
6. **REMINDER:** Previously shampooed carpets usually have a heavy build-up of old shampoo residue which can cause the vacuum system to ingest foam and result in damage to the vacuum motor. Remember to add the recommended amount of defoamer to the recovery tank every time you fill the solution tank.
7. Turn on the heater switch on and **allow 15 minutes for the heater to get the water to peak temperature.** (This time will differ based on initial temperature of the water).



WARNING: DO NOT TURN HEATER ON BEFORE YOU FILL THE SOLUTION TANK, OR RUN IT DRY. Doing this may result in damage to the machine, and will void your warranty.

OPERATING INSTRUCTIONS – CARPET TOOL

1. Once the water has been heated, turn on the vacuum and solution switches. Turning on the vacuum switch will automatically turn off the heater.
2. Once on the carpet, slowly pull the tool towards you with the solution valve trigger engaged. *Do not over wet the carpet!* Return over the same area going forward with the trigger Dis-engaged. This is called a dry pass. Move the wand over to start your next pass. Make overlapping passes to prevent streaking.
3. When you run out of solution, turn both switches to the off position. Disconnect vacuum hose from recovery tank. Unfasten latches and lift recovery tank off solution tank. Drain recovery tank completely and flush it several times with clean water to remove all dirt and prevent odor build-up.
4. When the job is completed, turn all switches to the "OFF" position and disconnect the vacuum and solution hoses from the carpet tool and the machine. Unplug power cords. Drain recovery tank as before. Tip solution tank upside down over a sink to drain the unused cleaning solution.

CLEANING UPHOLSTERY

Cleaning upholstery with success requires a good knowledge of the type of fabric to be worked on. Look for the cleaning instruction label sewn on the underside of the furniture for the recommended method of cleaning the fabric. If it calls for dry cleaning, do not attempt to clean with the wet extraction method. Otherwise, damage to the fabric could occur. Extraction works perfectly on most synthetic fabrics including synthetic velvets and microfiber.

Before proceeding, test the fabric for colorfastness. Apply a small amount of ready-to-use cleaning solution on the fabric in an inconspicuous spot. Wait 2 to 3 minutes and blot the area with a white terry cloth towel. If no color is transferred to the towel, the fabric should be safe to clean. If a little color is transferred, there is some risk of colors running when you clean. It may be possible to stabilize colors by cleaning with an acidic rinse.

1. Prepare the machine in the same manner as you would for carpet cleaning.
2. Clean with the upholstery tool using as little solution as possible. Make overlapping passes to prevent streaking. Go over the area you just cleaned without depressing the lever (dry pass / vacuum only) and gauge the amount of moisture extracted through the plastic tool for dryness. On heavily soiled areas like arm rests, pre-treat with a recommended pre-spray and/or hold the upholstery tool a few inches above the fabric and press lever to spray on the solution before making a pass.

DAILY MAINTENANCE

1. Always keep the machine clean, inside and out.
2. Pour 1 quart of clean hot water in the solution tank. Turn the pump on and flush the entire system through the wand nozzles for about 1 minute to prevent alkaline build-up.
3. Remove dirt and lint build-up inside the circular filter screen located between the recovery and solution tanks. Lint should be cleaned off so that air flow is not impeded.
4. Check the solution tank strainers in the solution tank. If lint has accumulated on the screens, remove and rinse them in clear running water.

PERIODIC MAINTENANCE

All EDIC machines are engineered and built to require a minimum amount of maintenance. But like any machine, it does require some care to keep it in optimum working condition. Careful attention to these maintenance instructions will give you maximum operating performance and will increase the life expectancy of your machine.

- **Solution Lines and Fittings.** Flush the machine at least once a month with a solution of 3 parts water with 1 part white vinegar in order to neutralize the alkaline residue left by the cleaning solution.
- **Quick Connect Coupler.** Spray with a lubricant to prevent coupler from sticking.
- **Solution Pump.** The same above procedure used on solution line and fittings applies to the pump.

TROUBLESHOOTING

ELECTRICAL SYSTEM

Problem	Possible Cause
No electrical power.	1. Defective power cord. 2. House or building circuit breaker tripped.
Switch is turned on. Power is intermittent to All motor(s)	1. Faulty electrical cable. 2. Defective switches. 3. Loose terminal or discolored terminal connections.

VACUUM SYSTEM

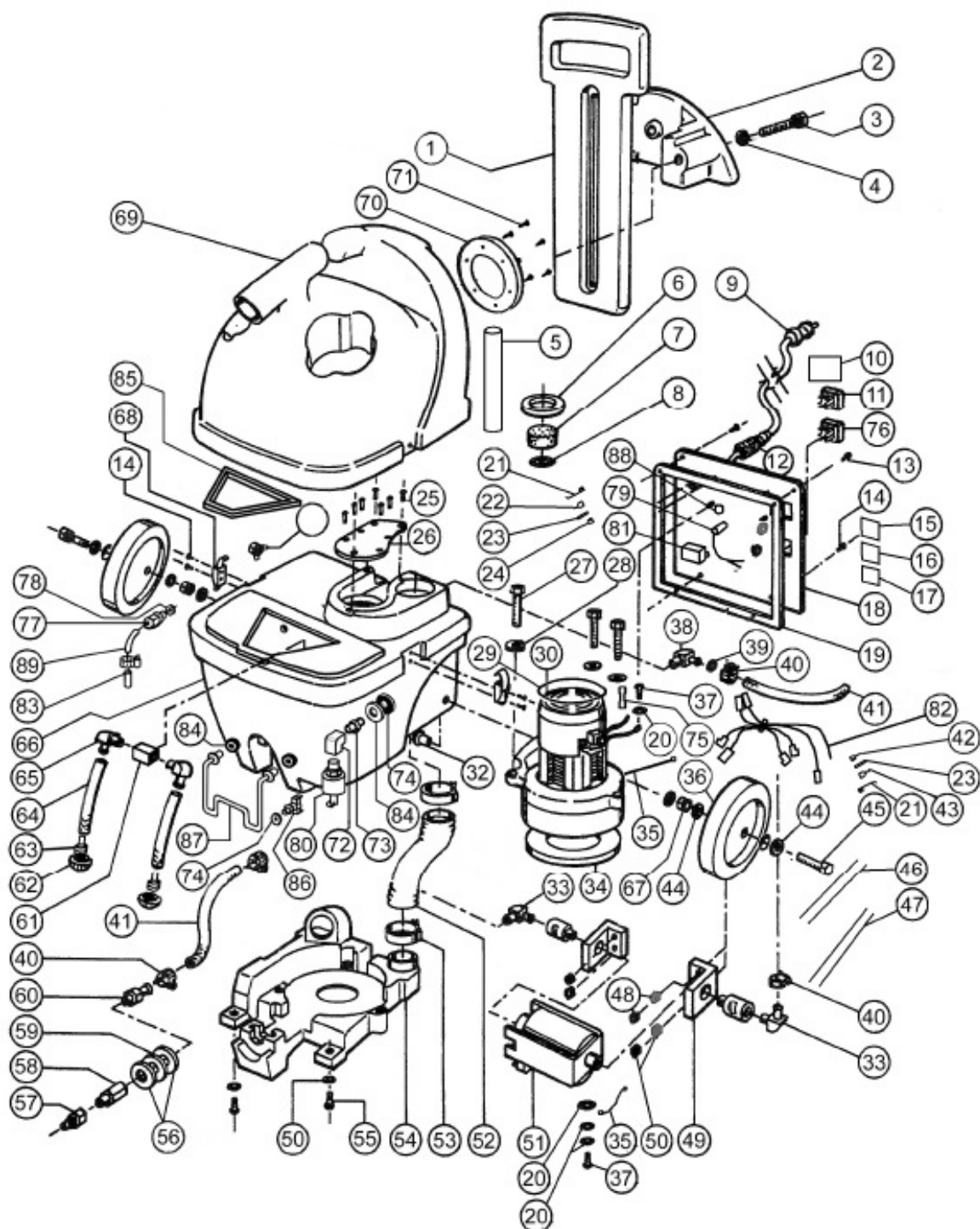
No Vacuum or Low Vacuum	1. Vacuum filter between tanks is clogged. 2. Vacuum hose is not tight onto recovery tank inlet tube. 3. Recovery tank is not firmly clamped down onto solution tank. 4. Vacuum gasket located between the recovery and solution tanks is worn or damaged. 5. Check switch to make sure it is switched to 'vacuum' mode, and not on "heater" mode.
-------------------------	--

SOLUTION SYSTEM

Pump motor on, no spray Thru spray tips	1. Clogged spray tips. (Do not put pin through tip to unclog.) 2. Clogged solution intake filter screens. 3. Plugged quick disconnect coupler.
Uneven or weak spray from tips.	1. Clogged or dirty spray tips. 2. Accumulated dirt on solution intake filter screens. 3. Accumulation of debris inside pump and plumbing. 4. Worn nozzles.

HEATING SYSTEM

Heater is not turning on	1. Make sure solution tank is filled to the required level. (If you need to look in the tank to do this, turn off heater/vacuum switch and wait five minutes to open screen and check tank level). 2. Bad fuse may need to be reset or replaced. 3. Bad switch. 4. Check to see if thermostat has gone off or is not functioning.
--------------------------	--



300MH-HT

339BH-HT

ITEM #	PART # (110V)	220V	DESCRIPTION	QTY
1	F11800		Handle, EDIC Granite Blue	1
2	F11791		Cordwrap	1
3	C00314-1		Hex Bolt, 1/4" - 20, zinc	2
4	C00251		Lockwasher, 5/16", Split	2
5	K11146		PVC pipe, white, 1"	7 3/4"
6	E11044		Gasket, 2.25 OD	1
7	E11045		Foam Disc, 1.5 OD 1/2 Thick	1
8	D11043		Filter Screen	1
9	B10719		Power Cord, 16/3, 20', Black	1
10	H02548-2		Label, "Important: This Equipment..... English/Spanish	1
11	B11751		Rocker Switch, Black	1
12	B11199		Strain Relief	1
13	C11529		Screw, 10-32 X 3/8"	2
14	C00310-38		Screw, 8-32 X 3/8"	6
15	H03545		Cover, Serial # Label	1
16	H00565-5		Label, Serial Number, Standard	1
17	H10976-1		Label, UL STD, 561/507	1
18	D11699		Switch Plate	1
19	E11722		Gasket, Vent Plate	1
20	C00256		Lockwasher, #10 EXT. Star	6
21	B11873		18Ga. Wire Black 1015	2
22	B11874		18Ga. Wire Black 1015	1
23	B11720		Flag Connector .250	2
24	B11872		Terminal Lug, Vinyl	1
25	C00293		Screw, #8 X 1/2" Pan Black	5
26	F11711		Vac Duct	1
27	C12920		Screw, 10-32 X 2-1/2	3
28	C00238		Washer, .275", Neosteel	3
29	E11129		Gasket, Base	12"
30	G00537	G02521	Vacuum Motor, 82", 5.7" Reverse	1
31	J00656		Hose Clamp, 11/2"	1
32	C11724		3/8-16, Weld Nut	2
33	A00134		90° Elbow, 1/8 MP X 1/4 B	2
34	E11169		Gasket, Vac Motor	1
35	00185-6A		Wire Assembly, PS/PSN/5S	2
36	G11688		Wheel, 6"	2
37	C00284		Screw, 10/32 X 3/8 Ground	2
38	A00166		90° Elbow, 1/8 FP X 1/4 B	1
39	C00252		Washer, 3/8 X 13/16	1
40	J00651		Screw Clamp, 1/4 to 5/8	4
41	J11154-1		Solution Hose, 1/4" Wire 12"	2
42	B00180-10-3		Ring Terminal, #10 Center	2
43	B10980		Flag Connector .250X .032	6
44	C11540		Washer, 3/8ID X 7/8OD X 3/32 Thick, Zinc	6
45	C13121		Bolt, 3/8-16 X 2-3/4	2

339BH-HT

ITEM #	PART # (110V)	220V	DESCRIPTION	QTY
46	B00190		Nylon Tie, 4"	5
47	B00191		Nylon Tie, 11", Black	1
48	C00278		Locknut, 10-32, Nylon, SS	4
49	E11691		Pump Bracket	2
50	C03251		Washer, 3/16"ID, Backup, .490 OD, Aluminum, .060 Thick	6
51	G11689	G11689-1	Pump, Oscillating	1
52	J00618-1		Vacuum Hose, 1 1/2", Wire, Reinforced Grey	12"
53	J00650		Screw Clamp, #24, 1 1/4"	1
54	F11803		Motor Base, Spotter	1
55	C90007-1		Screw, 10-32 X 1" Phil Truss Head, SS	2
56	C00232		Washer, 1/2" Flat	2
57	A00104		Quick Disconnect, 1/4 Male	1
58	A00121		1/4 MP X 1/4 FP Brass	1
59	C11244		Washer, 1/2", smooth	1
60	A00139		1/4 MP X 1/4 Barb, Brass	1
61	A00152		Tee, 1/8 MP X 1/8 FP X 1/8 FP	1
62	D11684		Inlet Filter	2
63	A00136		1/4 Barb X 1/8 MP, Nylon	2
64	J00596		Solution Hose, 1/4" Braided, 4 3/4" each (specify)	2
65	A00130		90° Elbow, 1/8 MP X 1/4 B	2
66	F11802		Solution Tank	1
67	C11702		Hex Nut, 3/8 16	2
68	D12020		Latch, Black, With slotted holes	2
69	F11801		Recovery Tank, Spotter, EDIC Granite Blue	1
70	F11723		Clean Out Port	1
71	C02237		Screw, Phillips (Clean Out Port)	6
72	A00073		90 ELBOW, 1/8FP X 1/8FP	1
73	A00114B		1/4 MP X 1/8 MP, BRASS	1
74	A00124		HEX NUT, 1/4 NPT, BRASS	2
75	B00181		WIRE SPLICE, BLUE, 1-WIRE	4
76	B02211-1		SWITCH, ROCKER, GREEN	1
77	B02212		STRAIN RELIEF W/ NUT	1
78	B02214		STRAIN RELIEF NUT	1
79	B11756		INDICATOR LIGHT, GREEN	1
80	B11985		SWITCH, FLOAT	1
81	B11986	B12000	RELAY, 120V	1
82	B12016		HARNESS, BRAVO W/ HEAT	1
83	B12085		THERMAL FUSE, 219 DEG.	1
84	E12022		WASHER, RUBBER, 1/2"	3
85	F90008		FILTER W/ FRAME	1
86	G11272		THERMOSTAT, 150 DEG.	1
87	G12055	G13181	HEATER ELEMENT, BRAVO	1
88	H10911		LABEL, GROUNDING MARK	1
89	J12097		TUBING, POLY 1/4	0.5 FT

[illegible]



1753 Blake Ave □ Los Angeles, CA 90031 □ (800) 338-3342 or (323) 660-1365 □ Fax (323) 667-0144 □ www.edic-usa.com